



TRANSLATION OF THE EPIGRAPH OF THE MEDICI STONE PLAQUE

DEDICATED TO GOD THE GREATEST
 THIS RIVERBANK
 BRINGING ENORMOUS ADVANTAGES TO THE TOWN
 CONSTRUCTED AND MAINTAINED BY THEIR ANCESTORS
 FOR OVER FIVE HUNDRED YEARS
 RECENTLY DESTROYED BY THE FORCE OF THE RIVER
 REBUILT BY THE CITIZENS OF COLLE
 MUCH LARGER AND MORE EFFICIENT THAN BEFORE
 UNDER THE AUSPICES OF FERDINANDO DEI MEDICI
 GRAND DUKE OF TUSCANY
 1606

ChiantiBanca



COMUNE COLLE DI VAL D'ELSA
 Via F. Campana, 18
 53034 COLLE DI VAL D'ELSA (SI)
 Tel. 0577 912111 - 912251
 Fax 0577 912283
 ambiente@comune.collevaldelsa.it
 www.comune.collevaldelsa.it



Via XXV Aprile, 106 - Piazzale La Buca
 53034 COLLE DI VAL D'ELSA (SI)
 Tel. +39 3663424638
 +39 3209004612
 +39 3294104518
 arcipescacollevaldelsa@gmail.com

CONSULENZA E REGOLAMENTI PER L'ATTIVITÀ DELLA PESCA SPORTIVA



ASSOCIAZIONE PROLOCO COLLE DI VAL D'ELSA
 Piazza Arnolfo di Cambio, 10
 Tel. 0577 920389 - proloco.colle@tin.it

UFFICIO TURISTICO
 Via del Castello, 33 - Tel. 0577 922791

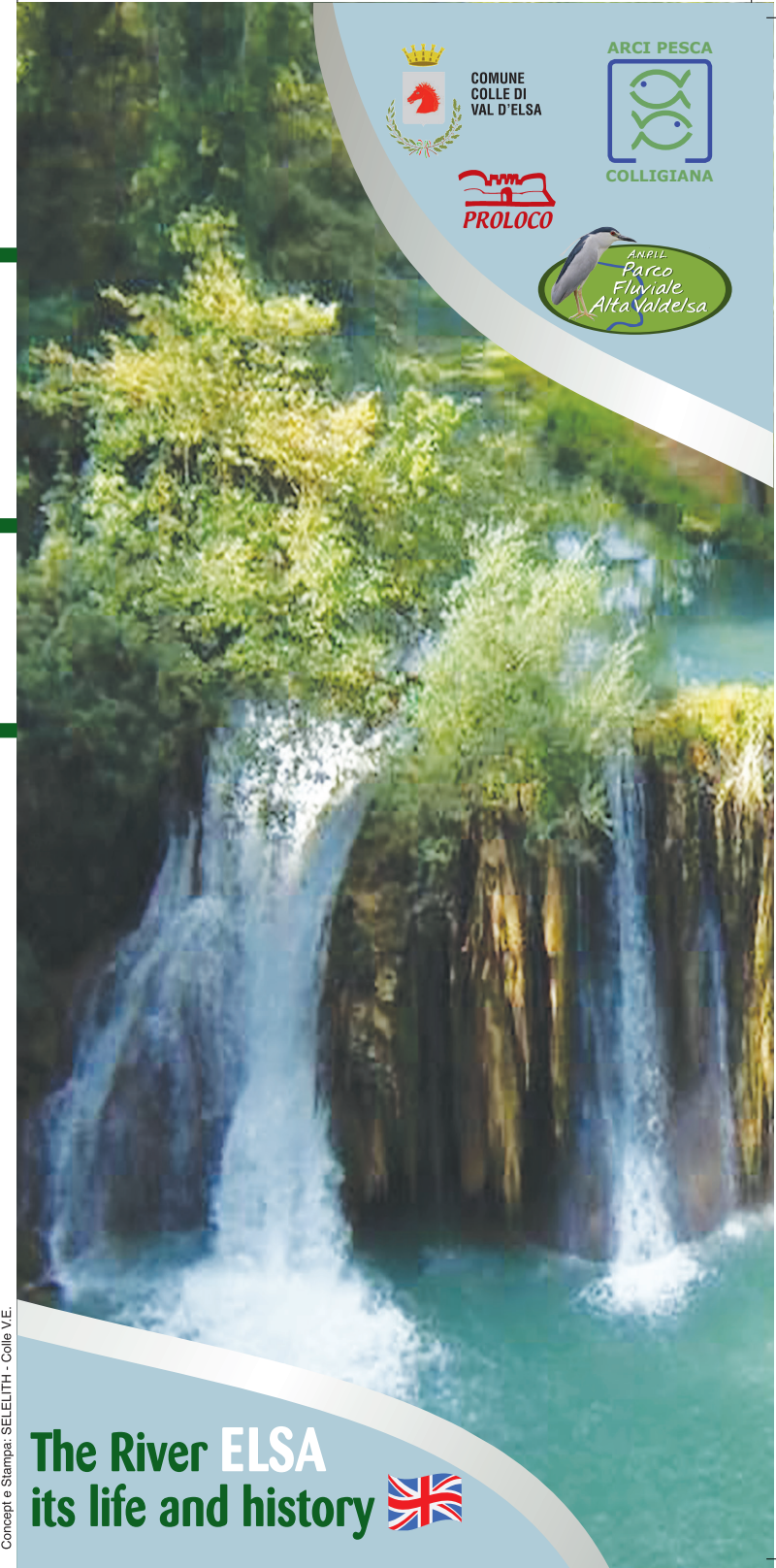


Via XXV Aprile, 106 - Piazzale La Buca
 53034 COLLE DI VAL D'ELSA (SI)
 Tel. +39 3663424638
 parcofluviale@comune.collevaldelsa.it

AREA NATURALE PROTETTA DI INTERESSE LOCALE PARCO FLUVIALE ALTA VALDELSA

L'ANPIL Alta Val d'Elsa

L'ANPIL Alta Val d'Elsa is a nature reserve located along the banks of the River Elsa.
 Walking by the river one can admire a wide variety of animal and vegetable life typical of a fluvial environment.



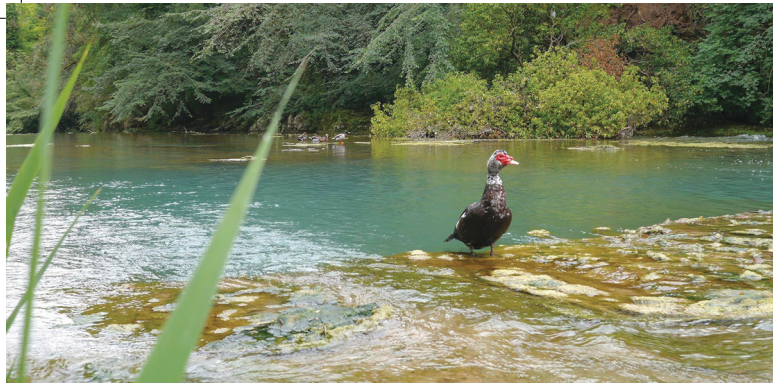
COMUNE COLLE DI VAL D'ELSA



PROLOCO



The River ELSA
 its life and history



History of the River Elsa

The River Elsa has its source in two springs, one at Monte della Montagnola at Palazzo al Piano and the other at Moli. Especially in the summertime these springs are almost dormant and produce such a small amount of water that the stretch of the river up to Pievesa is called the Dead Elsa. The first truly productive spring, known also to both the Etruscans and the Romans, is called "LE CALDANE", whilst the second and most important one, located at Calcinaia, is called "LE VENE" because of its many flowing veins of water.

From this point the river is called the Living Elsa. The Elsa is one of the most important rivers in Europe for fish as from two to three periods of fish reproduction occur in the Elsa every year due to the constantly mild temperature of the water compared to normal waterways where reproduction occurs only once a year.

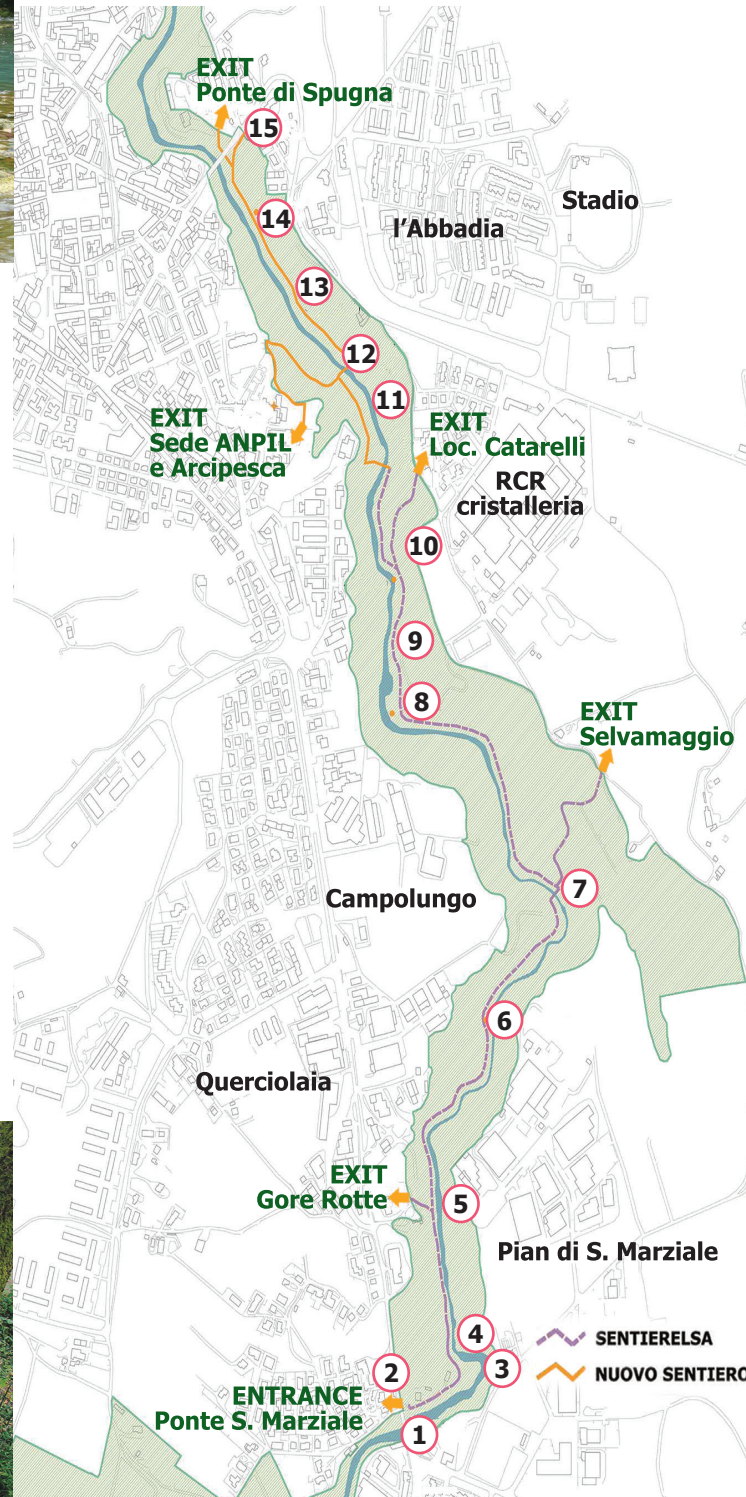
The equipped trail, called "Sentierelsa", starts at San Marziale and proceeds for a long stretch up to Ponte di Spugna. Along the way there are historical and environmental features to be seen that have brought development and wealth to the whole town.

The trail is about 4 kilometres long and is characterized by three ford river crossings called: San Giorgio, Apollo and Equiseti.

A.r.c.i. Pesca Colligiana



Il "Sentierelsa"



Legend

LIST OF THE MOST INTERESTING PLACES ALONG THE TRAIL

- ENTRANCE San Marziale**
 - 1 CALLONE The principal lock gate from which is formed the famous canal which passes through the town of Colle di Val d'Elsa and was the driving force of its crystal and paper making industries.
 - 2 MURETTO CON LAPIDE Retaining wall with stone plaque with coat-of-arms of the Medici Family built by Ferdinando in 1606.
 - 3 CASCATA DEL DIBORRATO waterfall which is 15 metres high and falls into a 10 metres deep basin.
 - 4 GROTTA DELL'ORSO limestone cave with an opening which resembles a bear.
 - EXIT Gore Rotte**
 - 5 ALBERAIA location of the field school called "io tu e l'acqua" (me you and the water) run by Arci Pesca Colligiano.
 - 6 TERRAZZA DI POPPEA in the 1930's and 40's the most popular swimming location of the local people.
 - 7 SAN GIORGIO FORD crossing of the River Elsa.
 - EXIT Selvamaggio**
 - 8 LA CONCHINA a stretch of the river almost circular in shape.
 - 9 TONFO DEI PRETI place where the seminarians of Colle used to go swimming.
 - EXIT Catarelli**
 - 10 MASSO BIANCO a large stone used by the local people for diving.
 - 11 APOLLO FORD crossing of the River Elsa.
 - 12 LA NICCHIA a favourite swimming location featured in a painting by Salvetti (1854-1931) which can be seen in the local 'Civico' Museum.
 - EXIT Sede ANPIL e Arcipesca**
 - 13 EUISETI FORD crossing of the River Elsa.
 - 14 SPIANATA DEI FALCHI place where hawks used to make their nests.
 - 15 RESTI PONTE DI SPUGNA the remains of the ancient bridge of Spugna.
 - EXIT Ponte di Spugna**
- AVERAGE TIME TO WALK TRAIL 3 HOURS

